



LOW TEMPERATURE UNDERCOUNTER DISHWASHER/GLASSWASHER

L-1Xe

Chemical Sanitizing Undercounter
Dishwasher/Glasswasher



CMA MODEL:L-1Xe



48" Undercounter dishtable
with Pre-Rinse



Universal Pedestal



Low Chemical Alarm

FEATURES

- 40 racks / 160 covers per hour.
- **Economical to operate. Uses only .99 gallons of water per cycle.**
- All stainless steel construction assures long life and years of trouble free operation.
- 12-1/4" door opening.
- Unique spray arm system features upper and lower stainless steel wash arms with reinforced end caps.
- Built-in chemical pumps and deliming system assures proper chemical usage.
- Convenient to service "Work-in-a-drawer". All electrical components are attached to a sliding drawer for easy access and service.
- Pumped drain allows for flexible installation. Requires no floor drain.
- Pump purging system improves results by eliminating soil and chemical carryover during rinse cycle.
- Stainless steel pump impeller. Offers extended life and service.
- Built-in strainer in water inlet system to prevent water valve from clogging.
- Two dishracks included.
- Built-in primer switches.
- Built-in instant start.
- Door safety switch makes operation safe.
- Immersion Heater

AVAILABLE OPTIONS

- The "TEMP-SURE" requires a separate 240v 3 phase 40 amp power supply
- 6" Stainless Steel Legs
4" Stainless Steel Legs
- Alternative electrical available for export
- Drain Board

**CMA
MIZER®**
Registered Trademark

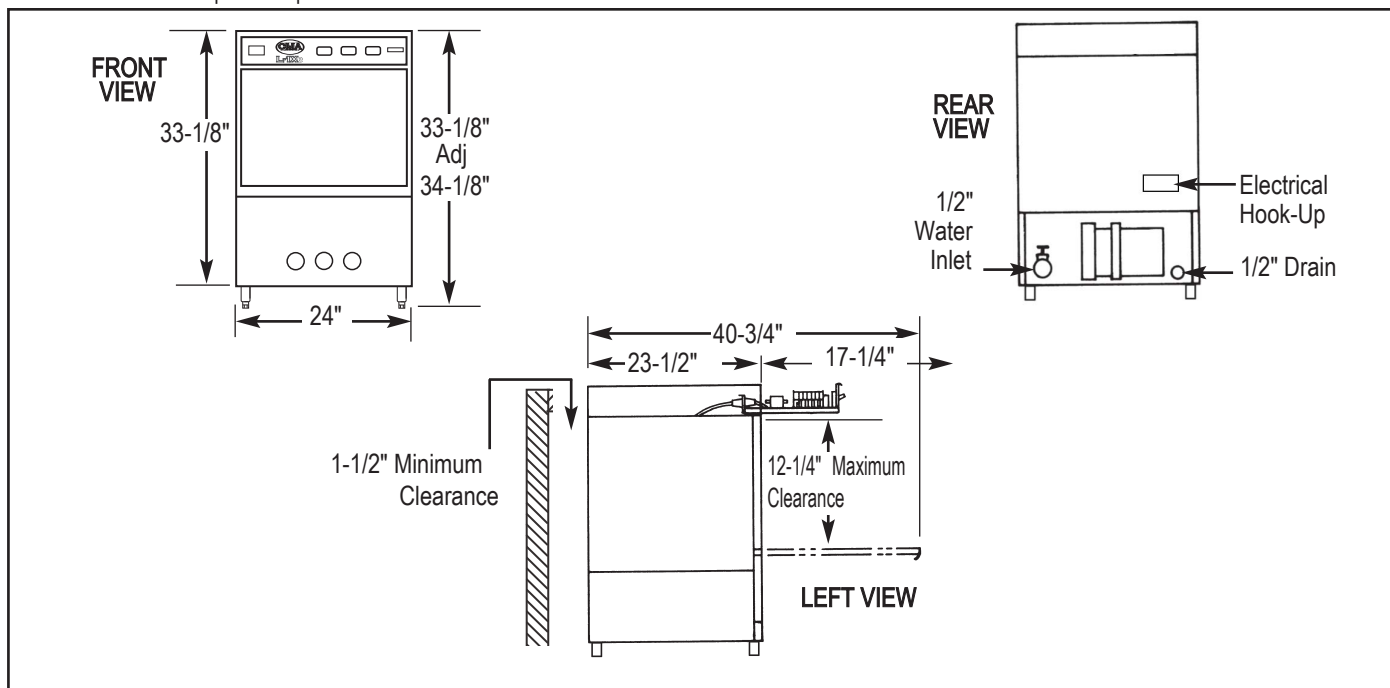


**L-1Xe**

Chemical Sanitizing
Undercounter
Dishwasher/Glasswasher

WARNINGS:

- Plumbing connections must be made by a qualified service company who will comply with all available Federal, State, and Local Health, Plumbing and Safety codes.
- CMA recommends utilizing a water softening system to maintain water hardness measurements of 3.5 gpg (grains per gallon) or less. This will assure maximum results and optimum operation of the dishmachine.

**Specifications:**

UNDERCOUNTER DISHWASHER	L-1Xe	METRIC	USA	METRIC
OPERATING CAPACITY RACKS PER HOUR (NSF RATED)	40	40		
OPERATING CYCLE WASH TIME-SEC RINSE TIME-SEC DWELL/PURGE-SEC TOTAL CYCLE TIME	46 29 15 90	46 29 15 90		
WASH TANK CAPACITY	.99 GAL.	(3.75 L)		
WASH PUMP CAPACITY	52 GPM	(196.8 LPM)		
OPERATING TEMPERATURE REQUIRED RECOMMENDED	120°F 140°F	(49°C) (60°C)		
WATER CONSUMPTION PER RACK PER HOUR WATER INLET DRAIN	.99 GAL. 40 GAL. 1/2" 1/2"	(3.75 L) (150 L) (1.27 cm) (1.27 cm)		
WASH PUMP MOTORS HP			1	1
DIMENSIONS DEPTH WIDTH HEIGHT MAXIMUM CLEARANCE HEIGHT FOR DISHES			23-1/2" 24" 33-1/8-34-1/8" 12-1/4"	(59cm) (61cm) (84.7-87.3cm) (31cm)
STANDARD DISHRACK DIMENSIONS			1 20" x 20"	1 (50.8 x 50.8cm)
ELECTRICAL RATING			VOLTS 115	AMPS 16
APPROXIMATE SHIPPING WEIGHT			190#	(86.2kg)
SHIPPING DIMENSIONS			PALLET & BOX @ 29" X 28" X 40"	

Summary Specifications: Model L-1Xe CMA Energy Miser low temperature undercounter chemical sanitizing commercial dishwashers meets NSF, UL and CUL sanitation and construction standards WITHOUT the use of BOOSTER HEATERS. The model L-1Xe is constructed entirely of stainless steel. Each unit automatically washes, rinses and sanitizes food service utensils in standard 19-3/4"X19-3/4" racks. Units comes standard with upper and lower stainless steel wash arms. The L-1Xe incorporates a pump purging system that improves results by eliminating soil and chemical carryover during rinse cycle.

Advisory: CMA does NOT endorse "Tankless On-Demand" water heaters for use on CMA Dishmachine products. CMA DOES endorse, and highly recommends, the standard "tank" style water heaters, sized properly to handle each particular facility with its water heating requirements.



CMA Dishmachines 12700 Knott Street Garden Grove, CA 92841 • 800-854-6417 • 714-898-8781 • Fax: 714-895-2141 • www.cmadishmachines.com

CMA reserves the right to modify specifications or discontinue models without prior notification.

© 6-2020 CMA, Inc.

an Ali Group Company



The Spirit of Excellence